

For Sublease

# 808 Old Salem Rd NE

3,855 RSF

Class B Office

Albany, OR



All information contained herein was made based upon information furnished to us by the owner or from sources we believe are reliable. While we do not doubt its accuracy, we have not verified it and we do not make any guarantee, warranty or representation about it. The property offered is subject to prior sale, lease, change of price or withdrawal from the market without notice. License #01908328 | [avisonyoung.com](http://avisonyoung.com)

## RUTH DANA

Principal Broker  
[ruth@firstcommercialoregon.com](mailto:ruth@firstcommercialoregon.com)  
cell: +1 503.428.0243  
main: +1 503.364.7400

## TYLER REPSTAD

[tyler.repstad@avisonyoung.com](mailto:tyler.repstad@avisonyoung.com)  
cell: +1 916.878.8778  
main: +1 858.519.3258  
CA Lic. #01942179

## BRYN BURROWS

[bryn.burrows@avisonyoung.com](mailto:bryn.burrows@avisonyoung.com)  
cell: +1 858.722.2136  
main: +1 858.519.3508  
CA Lic. #02098208

**AVISON  
YOUNG**

# Property Highlights

- Class B office
- 3,855 RSF available
- Furniture can be made available if desired
- Ample parking
- Available through 9/30/2026
- Asking rate: Negotiable



## RUTH DANA

Principal Broker  
ruth@firstcommercialoregon.com  
cell: +1 503.428.0243  
main: +1 503.364.7400

## TYLER REPSTAD

tyler.repstad@avisonyoung.com  
cell: +1 916.878.8778  
main: +1 858.519.3258  
CA Lic. #01942179

## BRYN BURROWS

bryn.burrows@avisonyoung.com  
cell: +1 858.722.2136  
main: +1 858.519.3508  
CA Lic. #02098208

**AVISON  
YOUNG**



## Location Highlights

- Immediate access to I-5 freeway
- 25 minutes to Corvallis
- 5 minutes to Albany Municipal Airport & Linn County Fair

### RUTH DANA

Principal Broker  
ruth@firstcommercialoregon.com  
cell: +1 503.428.0243  
main: +1 503.364.7400

### TYLER REPSTAD

tyler.repstad@avisonyoung.com  
cell: +1 916.878.8778  
main: +1 858.519.3258  
CA Lic. #01942179

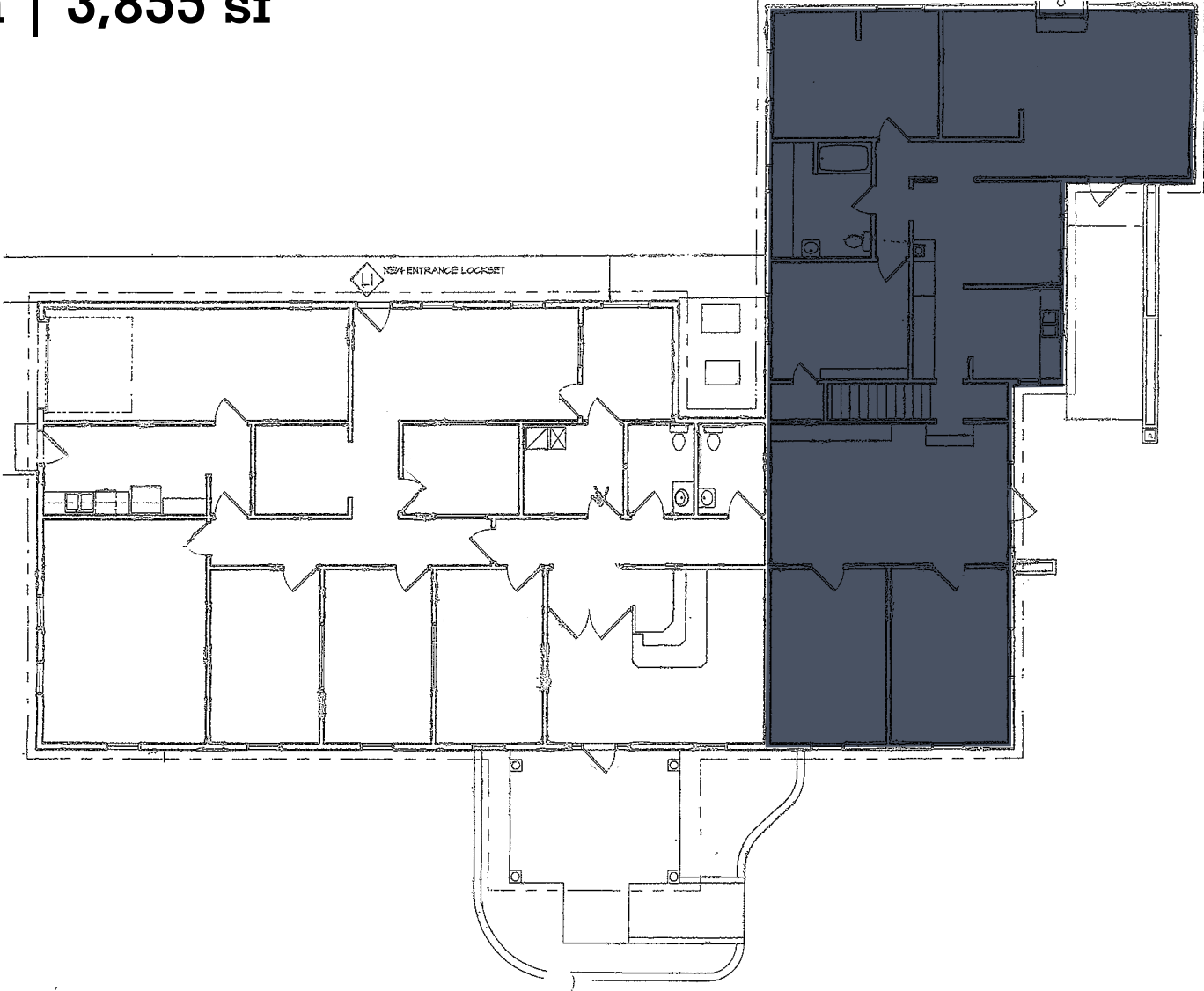
### BRYN BURROWS

bryn.burrows@avisonyoung.com  
cell: +1 858.722.2136  
main: +1 858.519.3508  
CA Lic. #02098208

**AVISON  
YOUNG**

# Floor Plan | 3,855 sf

LEASED



**RUTH DANA**

Principal Broker  
ruth@firstcommercialoregon.com  
cell: +1 503.428.0243  
main: +1 503.364.7400

**TYLER REPSTAD**

tyler.repstad@avisonyoung.com  
cell: +1 916.878.8778  
main: +1 858.519.3258  
CA Lic. #01942179

**BRYN BURROWS**

bryn.burrows@avisonyoung.com  
cell: +1 858.722.2136  
main: +1 858.519.3508  
CA Lic. #02098208



# Gallery



## RUTH DANA

Principal Broker  
ruth@firstcommercialoregon.com  
cell: +1 503.428.0243  
main: +1 503.364.7400

## TYLER REPSTAD

tyler.repstad@avisonyoung.com  
cell: +1 916.878.8778  
main: +1 858.519.3258  
CA Lic. #01942179

## BRYN BURROWS

bryn.burrows@avisonyoung.com  
cell: +1 858.722.2136  
main: +1 858.519.3508  
CA Lic. #02098208

**AVISON  
YOUNG**

# Gallery



## RUTH DANA

Principal Broker  
ruth@firstcommercialoregon.com  
cell: +1 503.428.0243  
main: +1 503.364.7400

## TYLER REPSTAD

tyler.repstad@avisonyoung.com  
cell: +1 916.878.8778  
main: +1 858.519.3258  
CA Lic. #01942179

## BRYN BURROWS

bryn.burrows@avisonyoung.com  
cell: +1 858.722.2136  
main: +1 858.519.3508  
CA Lic. #02098208

**AVISON  
YOUNG**