

For Sublease

804-808 Old Salem Rd NE

5,630 RSF

Class B Office

Albany, OR



All information contained herein was made based upon information furnished to us by the owner or from sources we believe are reliable. While we do not doubt its accuracy, we have not verified it and we do not make any guarantee, warranty or representation about it. The property offered is subject to prior sale, lease, change of price or withdrawal from the market without notice. License #01908328 | avisonyoung.com

RUTH DANA

Principal Broker
ruth@firstcommercialoregon.com
cell: +1 503.428.0243
main: +1 503.364.7400

TYLER REPSTAD

tyler.repstad@avisonyoung.com
cell: +1 916.878.8778
main: +1 858.519.3258
CA Lic. #01942179

BRYN BURROWS

bryn.burrows@avisonyoung.com
cell: +1 858.722.2136
main: +1 858.519.3508
CA Lic. #02098208

**AVISON
YOUNG**

Property Highlights

- Class B office
- 5,630 RSF available
- Furniture can be made available if desired
- Ample parking
- Available through 9/30/2026
- Asking rate: Negotiable



RUTH DANA

Principal Broker
ruth@firstcommercialoregon.com
cell: +1 503.428.0243
main: +1 503.364.7400

TYLER REPSTAD

tyler.repstad@avisonyoung.com
cell: +1 916.878.8778
main: +1 858.519.3258
CA Lic. #01942179

BRYN BURROWS

bryn.burrows@avisonyoung.com
cell: +1 858.722.2136
main: +1 858.519.3508
CA Lic. #02098208

**AVISON
YOUNG**



Location Highlights

- Immediate access to I-5 freeway
- 25 minutes to Corvallis
- 5 minutes to Albany Municipal Airport & Linn County Fair



RUTH DANA

Principal Broker
ruth@firstcommercialoregon.com
 cell: +1 503.428.0243
 main: +1 503.364.7400

TYLER REPSTAD

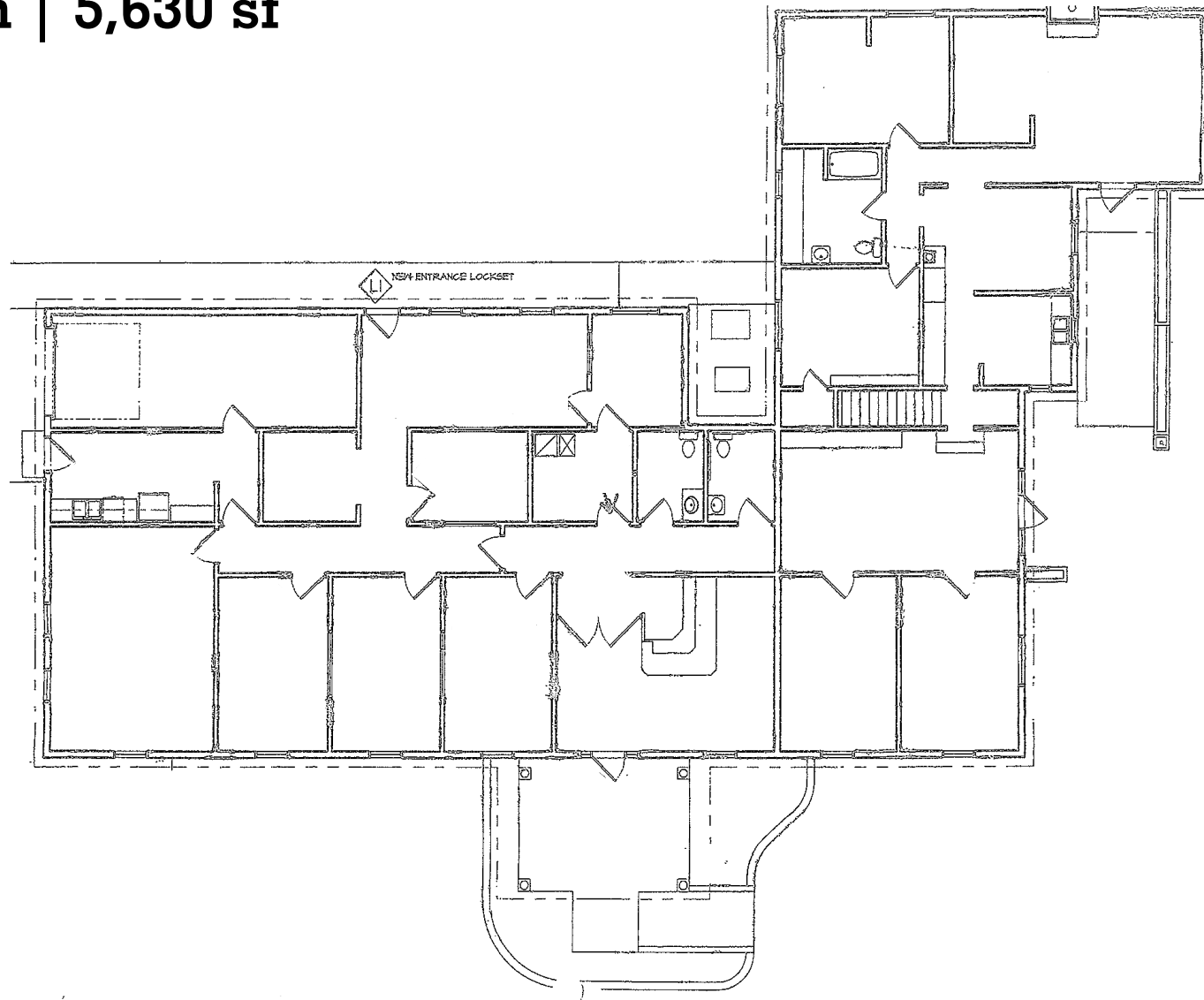
tyler.repstad@avisonyoung.com
 cell: +1 916.878.8778
 main: +1 858.519.3258
 CA Lic. #01942179

BRYN BURROWS

bryn.burrows@avisonyoung.com
 cell: +1 858.722.2136
 main: +1 858.519.3508
 CA Lic. #02098208

**AVISON
YOUNG**

Floor Plan | 5,630 sf



RUTH DANA

Principal Broker
ruth@firstcommercialoregon.com
cell: +1 503.428.0243
main: +1 503.364.7400

TYLER REPSTAD

tyler.repstad@avisonyoung.com
cell: +1 916.878.8778
main: +1 858.519.3258
CA Lic. #01942179

BRYN BURROWS

bryn.burrows@avisonyoung.com
cell: +1 858.722.2136
main: +1 858.519.3508
CA Lic. #02098208

**AVISON
YOUNG**

Gallery



RUTH DANA

Principal Broker
ruth@firstcommercialoregon.com
cell: +1 503.428.0243
main: +1 503.364.7400

TYLER REPSTAD

tyler.repstad@avisonyoung.com
cell: +1 916.878.8778
main: +1 858.519.3258
CA Lic. #01942179

BRYN BURROWS

bryn.burrows@avisonyoung.com
cell: +1 858.722.2136
main: +1 858.519.3508
CA Lic. #02098208

**AVISON
YOUNG**

Gallery



RUTH DANA

Principal Broker
ruth@firstcommercialoregon.com
cell: +1 503.428.0243
main: +1 503.364.7400

TYLER REPSTAD

tyler.repstad@avisonyoung.com
cell: +1 916.878.8778
main: +1 858.519.3258
CA Lic. #01942179

BRYN BURROWS

bryn.burrows@avisonyoung.com
cell: +1 858.722.2136
main: +1 858.519.3508
CA Lic. #02098208

**AVISON
YOUNG**